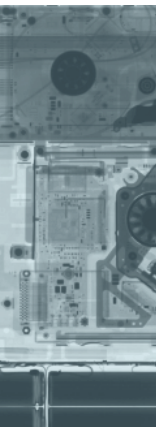


GX450

TECHNICAL SPECIFICATION

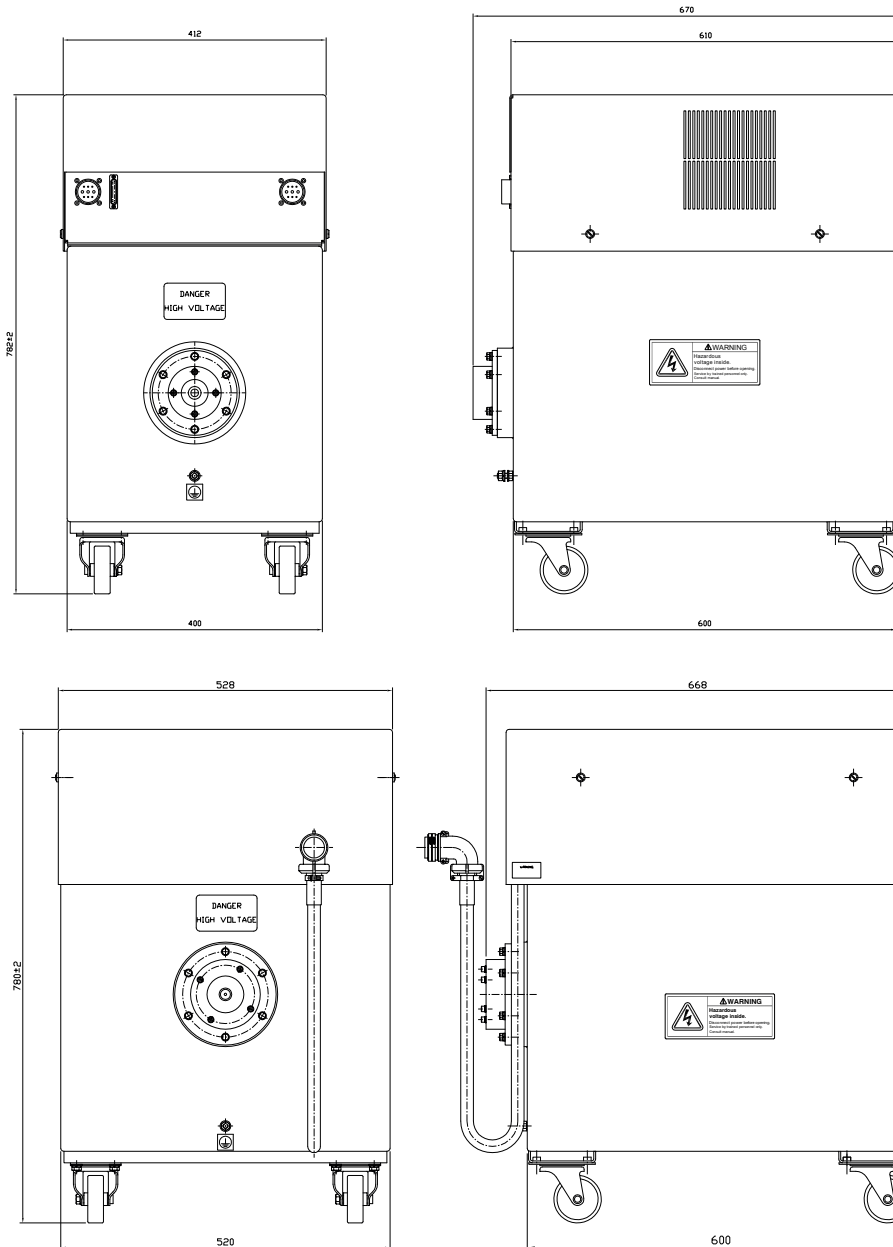
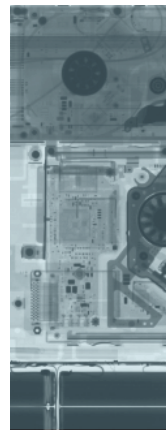


Maximum Power	4500 W
kV Range	10 – 450 kV
kV Accuracy	± 1% of Demand Value
kV Reproducibility	Better Than ± 0.01 kV
High Voltage Ripple	<10.0V/mA with 10M High Voltage Cable
mA Range	0 – 20 mA
mA Accuracy	± 0.5% of Demand Value
mA Reproducibility	Better Than 2µA
Input Voltage	220 V ± 10%, 47 – 63 Hz
Input Current	25 A at 220 V
Power Factor	Active PFC Better Than 0.98
Output Connector	R28
Dimensions Cathode (W x H X D)	412 x 782 x 670 mm
Dimensions Anode (W x H X D)	527 x 780 x 670 mm
Weight	305 kg combined
Storage Temperature	-40° C to + 70° C
Operational Temperature	0°C to + 40°C
Relative Humidity	95% non-condensing
Duty Cycle	100%
Comms	Analogue / RS232 / RS422 / Ethernet

X-RAY

GENERATORS • CONTROLLERS • TUBES

The Gulmay GX Series is the latest high specification range of high-voltage generators ranging in output power from 3025W to 7500W. Designed for a wide range of applications, GX generators are available in output voltage configurations from 65KV up to 450KV.



GULMAY Limited
Cyan House, 1 Canada Road, Byfleet, Surrey, KT14 7JL
United Kingdom
Telephone: +44 01932 339850

